



THE
DISTRICT
AT PREDATOR RIDGE

PARK VIEW
1 & 2 BEDROOM SUITES



THEDISTRICTPR.CA



PARK VIEW SITE MAP

SPACIOUS 1 & 2 BEDROOM SUITES

COMFORTABLE LIVING
 OUTDOOR ENTERTAINING
 NATURE VIEWS



THE DISTRICT

PREDATOR RIDGE

PARK VIEW

1 & 2 BEDROOM SUITES

- FIR - 1 BDRM
SUITES 45-52
- PINE - 1 BDRM
SUITES 41-44
- ASPEN - 2 BDRM
SUITES 53-60
- OAK - 2 BDRM
SUITES 25-40

VALLEY VIEW

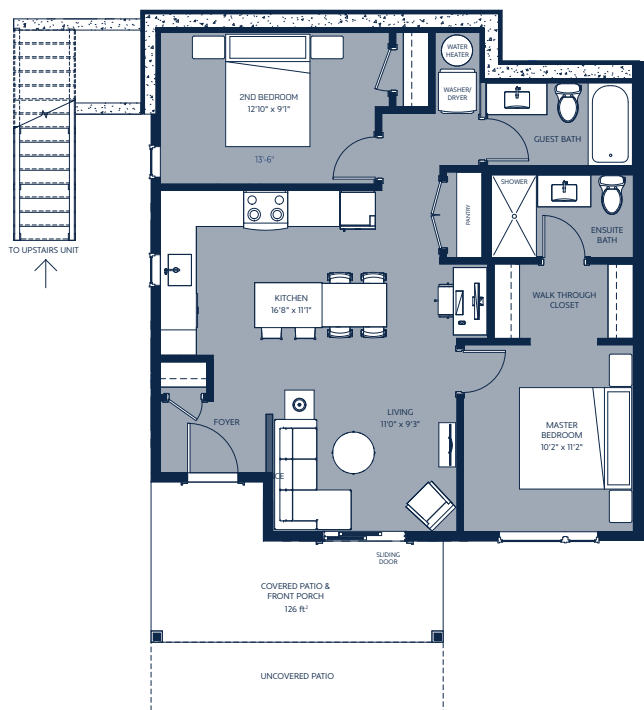
LUXURY TOWNHOMES

- 3 BEDROOM
TOWNHOMES 1 - 24

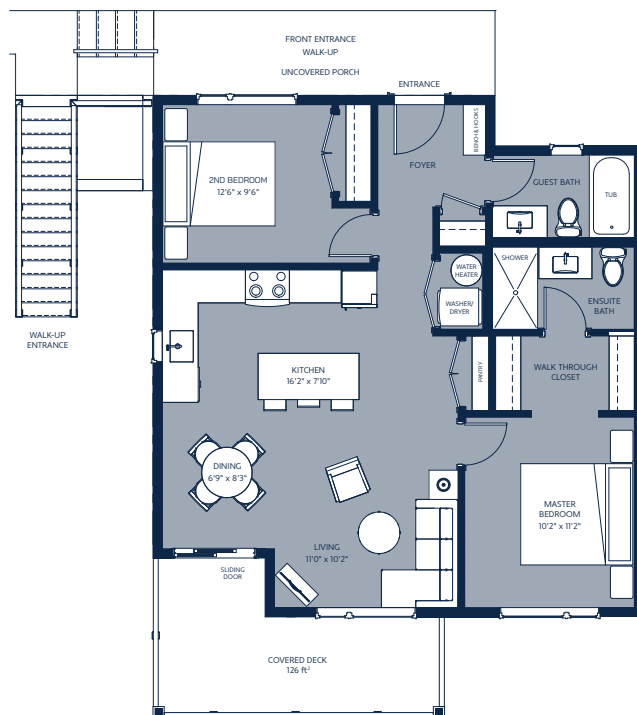
PARK VIEW UNIT TYPES

ONE & TWO BEDROOM SUITES

OAK SUITES 1 + 2



OAK 1 GROUND LEVEL



OAK 2 UPPER LEVEL

OAK 1 SUITE

Ground Level – 2 Bedroom

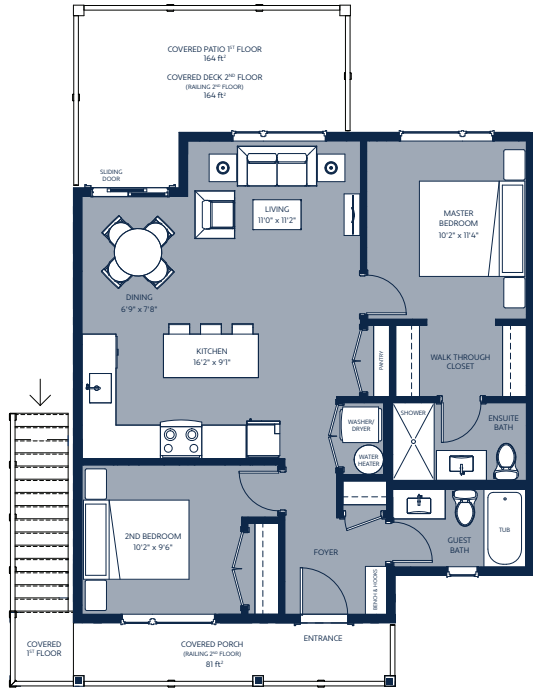
OAK 2 SUITE

Upper Level – 2 Bedroom

Interior Living Space	850 Sq Ft	Bedrooms	2
Exterior Living Space	126 Sq Ft	Bathrooms	2
TOTAL SQ FT	974 Sq Ft	Parking space	1



ASPEN SUITES



GROUND LEVEL & UPPER LEVEL

ASPEN SUITE

Ground Level – 2 Bedroom
& Upper Level – 2 Bedroom

Interior Living Space	850 Sq Ft
Exterior Living Space	164 Sq Ft
Bedrooms	2
Bathrooms	2
Parking space	1
TOTAL SQ FG	1014 Sq Ft



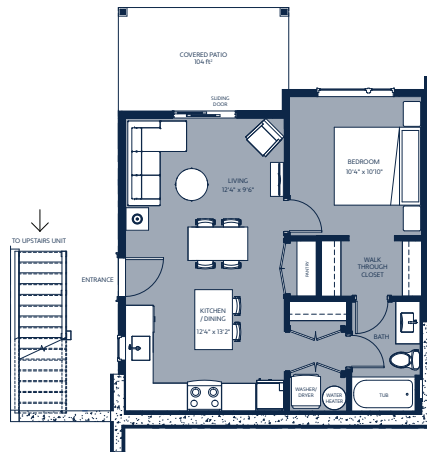
PINE 1 SUITE

Lower Level – 1 Bedroom

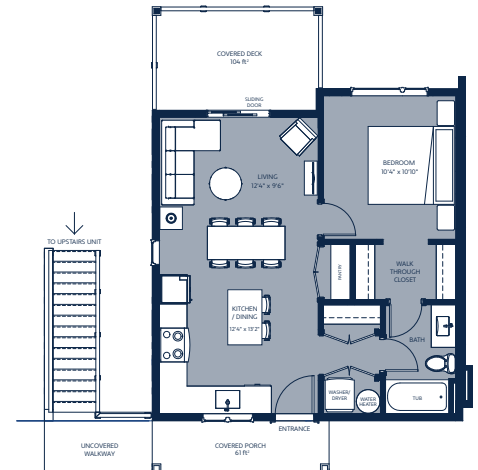
PINE 2 SUITE

Upper Level – 1 Bedroom

Interior Living Space	592 Sq Ft
Exterior Living Space	104 Sq Ft
Bedrooms	1
Bathrooms	1
Parking space	1
TOTAL SQ FT	696 Sq Ft



PINE 1 LOWER LEVEL



PINE 2 UPPER LEVEL

PINE SUITES 1 + 2

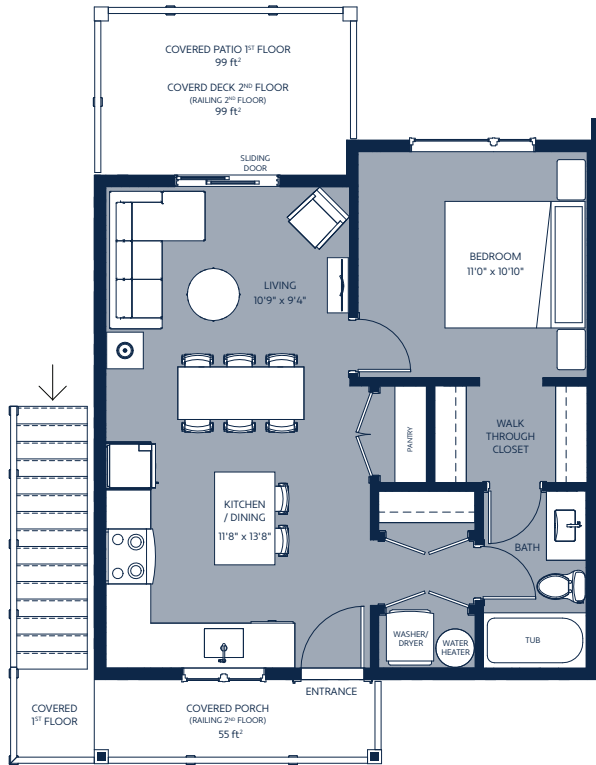
KEY FEATURES

- These beautiful one-level suites feature one and two bedroom unit options with a principal bedroom and ensuite in every home.
- Plenty of indoor and outdoor entertaining space to enjoy the park views.
- Spacious open concept kitchens with a quartz countertop island for gathering, a stainless steel appliance package, including electric range, dishwasher and fridge, and plenty of storage space.
- Enjoy thoughtful finishings throughout such as durable vinyl plank flooring, large view windows in the living and bedrooms, and LED lighting.
- Enjoy air conditioning in the summer and added heat in the winter with energy saving heat pump heating and cooling.
- Forest and peekaboo valley views of spectacular Predator Ridge, where you can step out into nature from your front door.
- A designated parking stall for every home plus additional visitor parking.

GENEROUS KITCHENS WITH FULL-SIZED ISLANDS & ABUNDANT NATURAL LIGHT



FIR SUITES

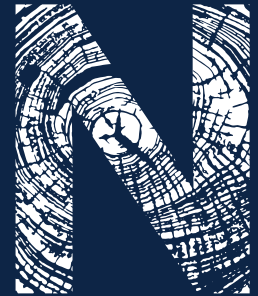


GROUND LEVEL & UPPER LEVEL

FIR SUITE

Ground Level – 1 Bedroom
& Upper Level – 1 Bedroom

Interior	592 Sq Ft
Living Space	
Exterior	99 Sq Ft
Living Space	
Bedrooms	1
Bathrooms	1
Parking space	1
TOTAL SQ FT	691 Sq Ft



**NORTH
GROVE**
COMMUNITIES

650 – 1190 Melville Street
Vancouver BC V6E 3W1

For Leasing Inquiries Contact
DEION ADAMS
250.258.3263
rent@northgrovecommunities.ca

NORTHGROVECOMMUNITIES.CA